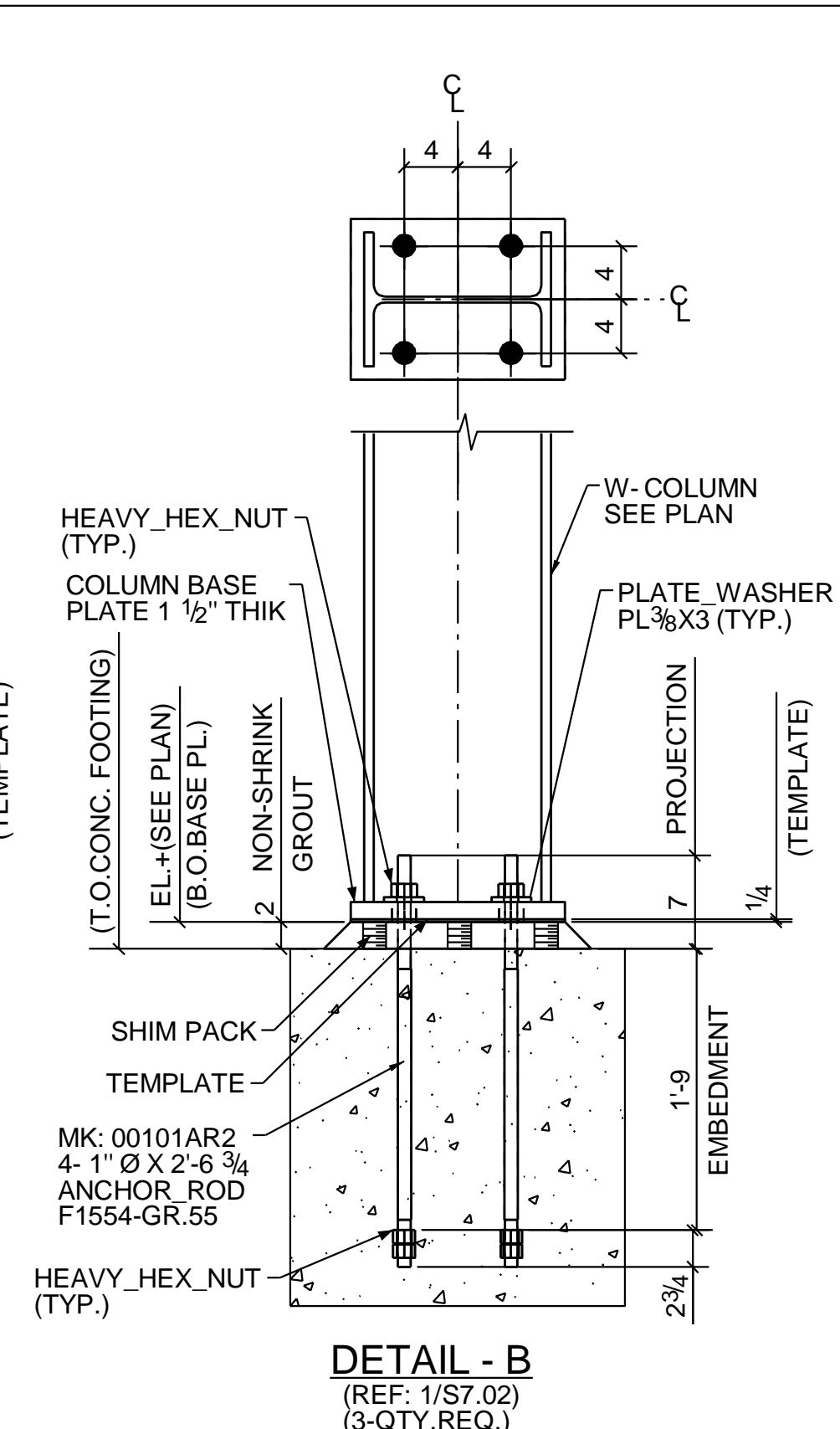
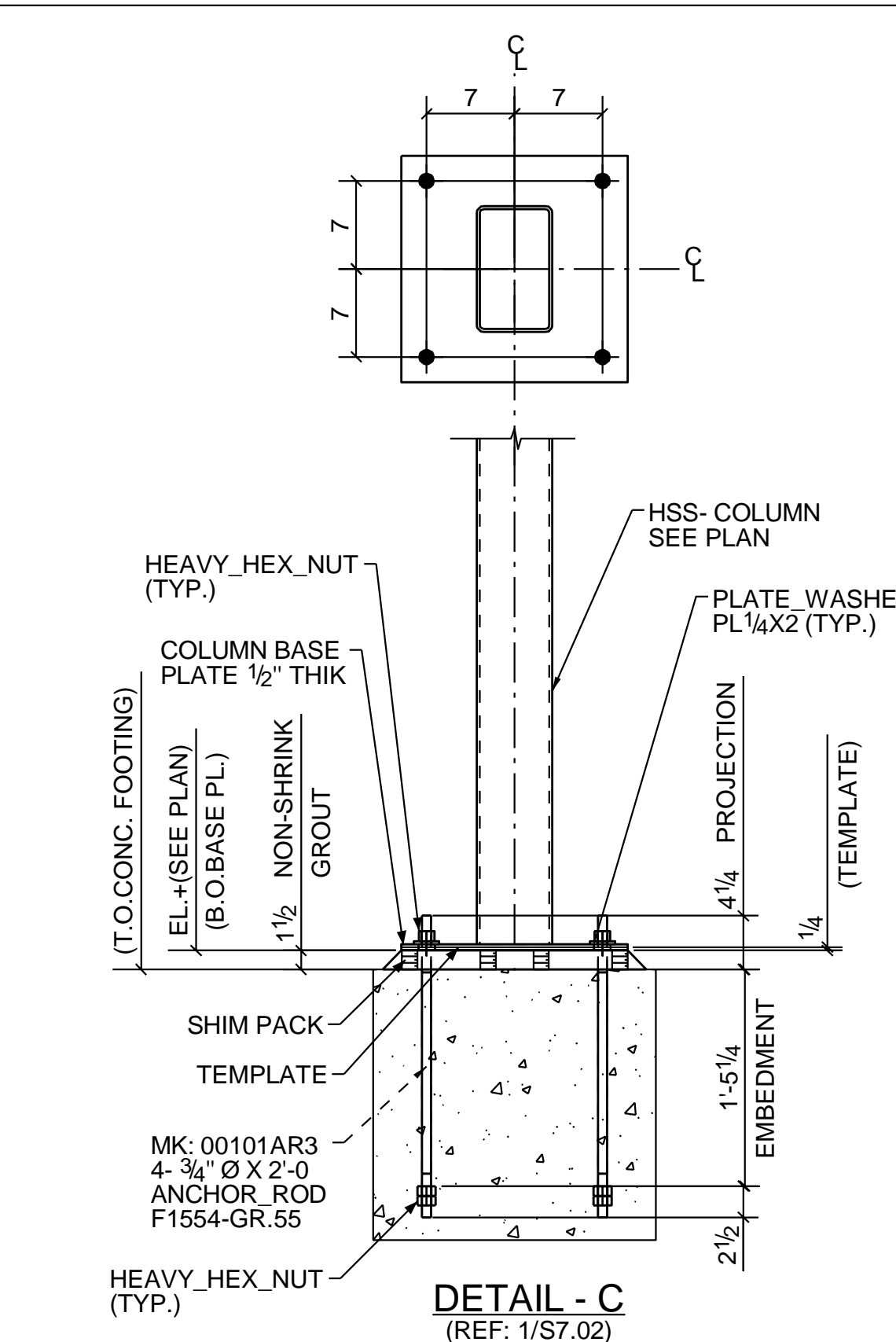


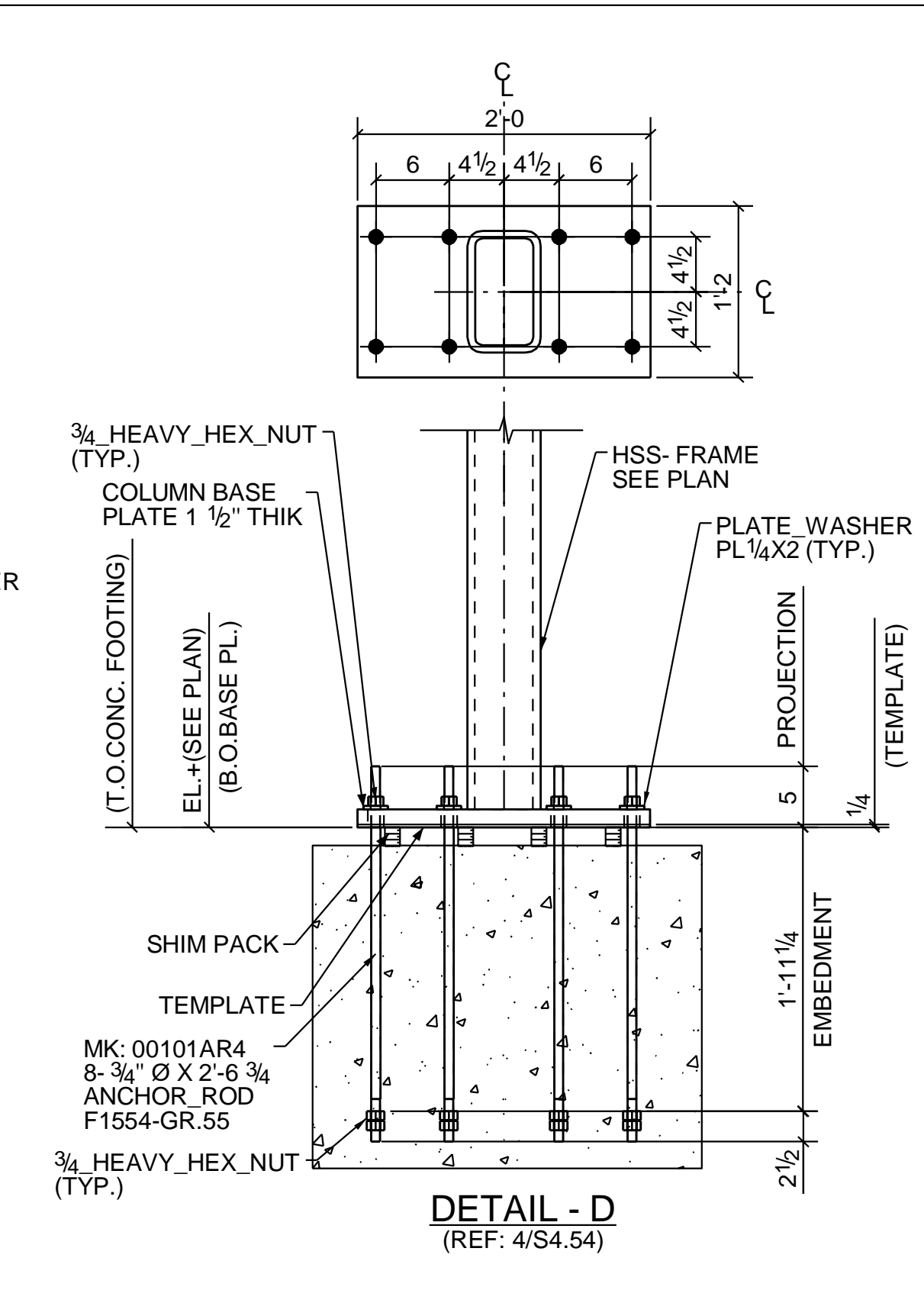
**DETAIL - A**  
(REF: 1/S7.02)  
(54-QTY.REQ.)



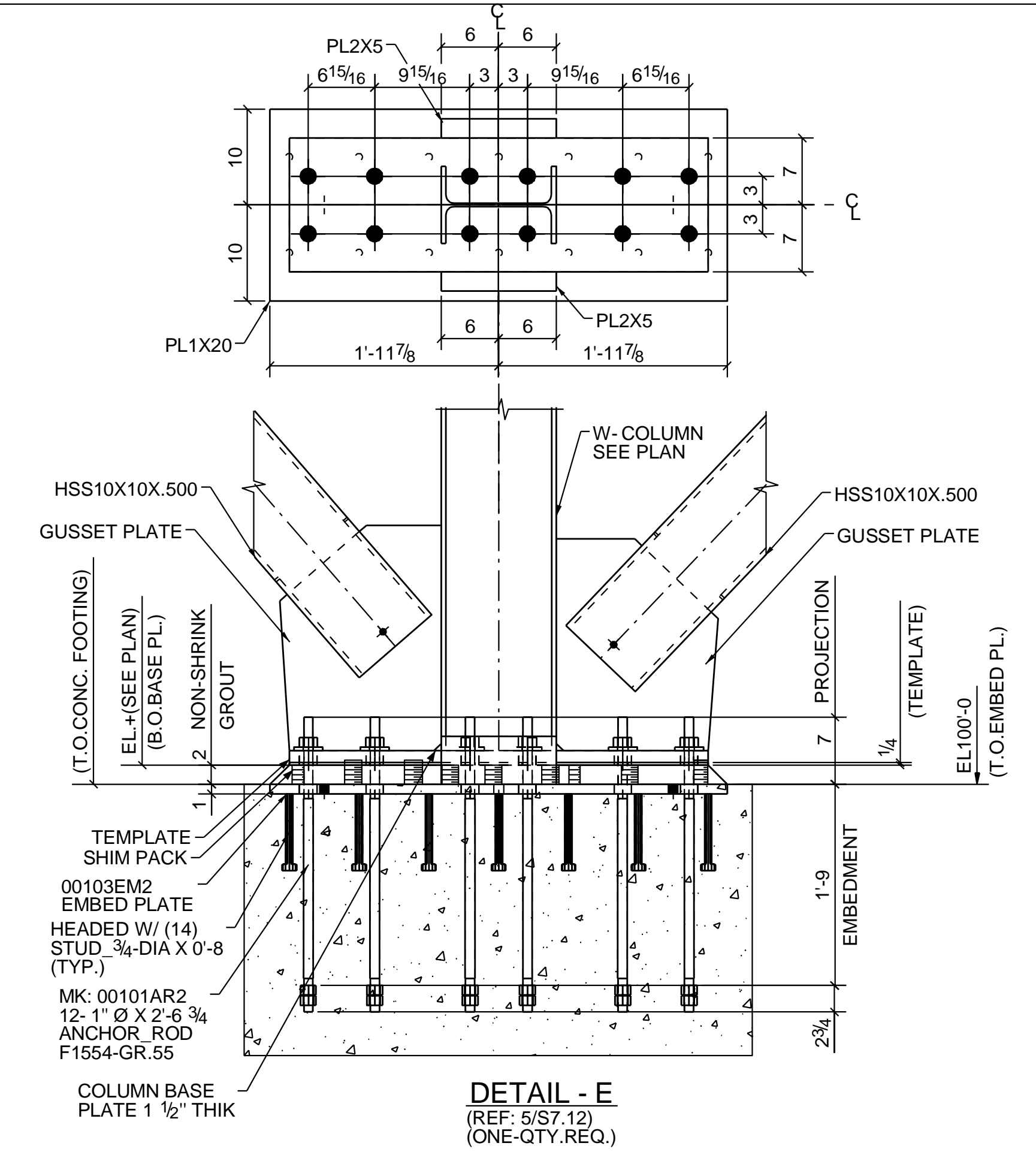
**DETAIL - B**  
(REF: 1/S7.02)  
(3-QTY.REQ.)



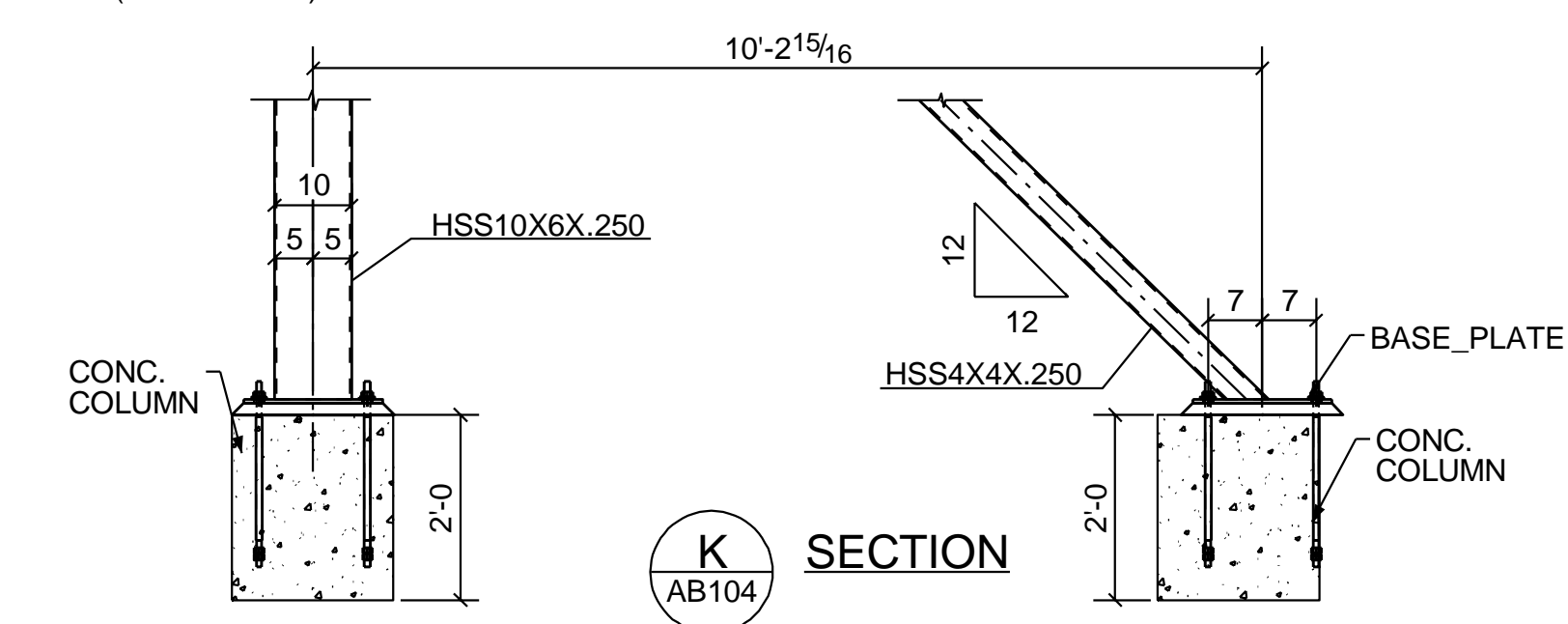
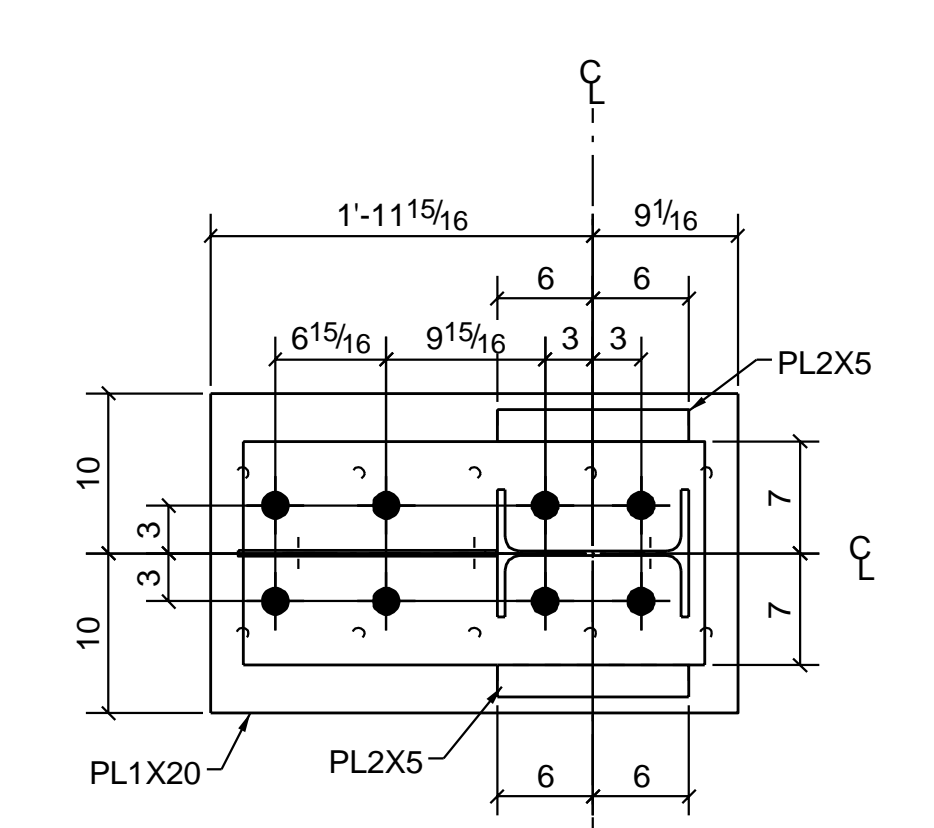
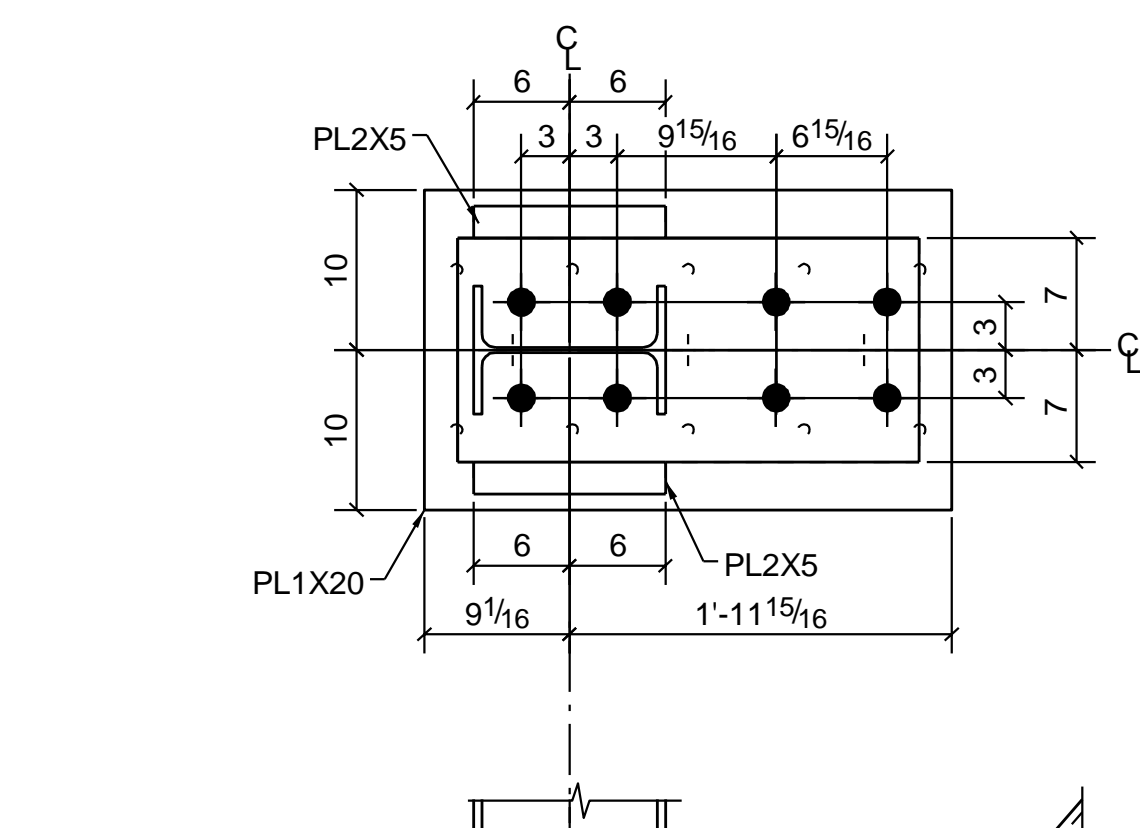
**DETAIL - C**  
(REF: 1/S7.02)



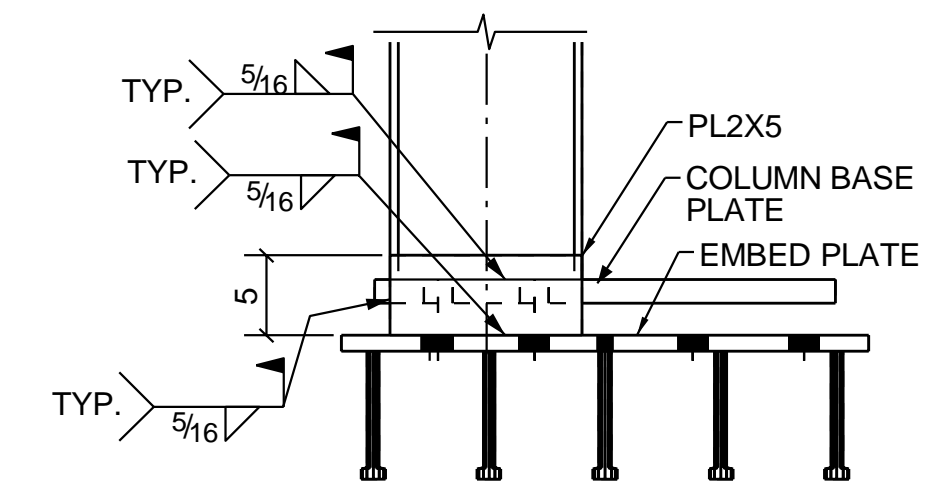
**DETAIL - D**  
(REF: 4/S4.54)



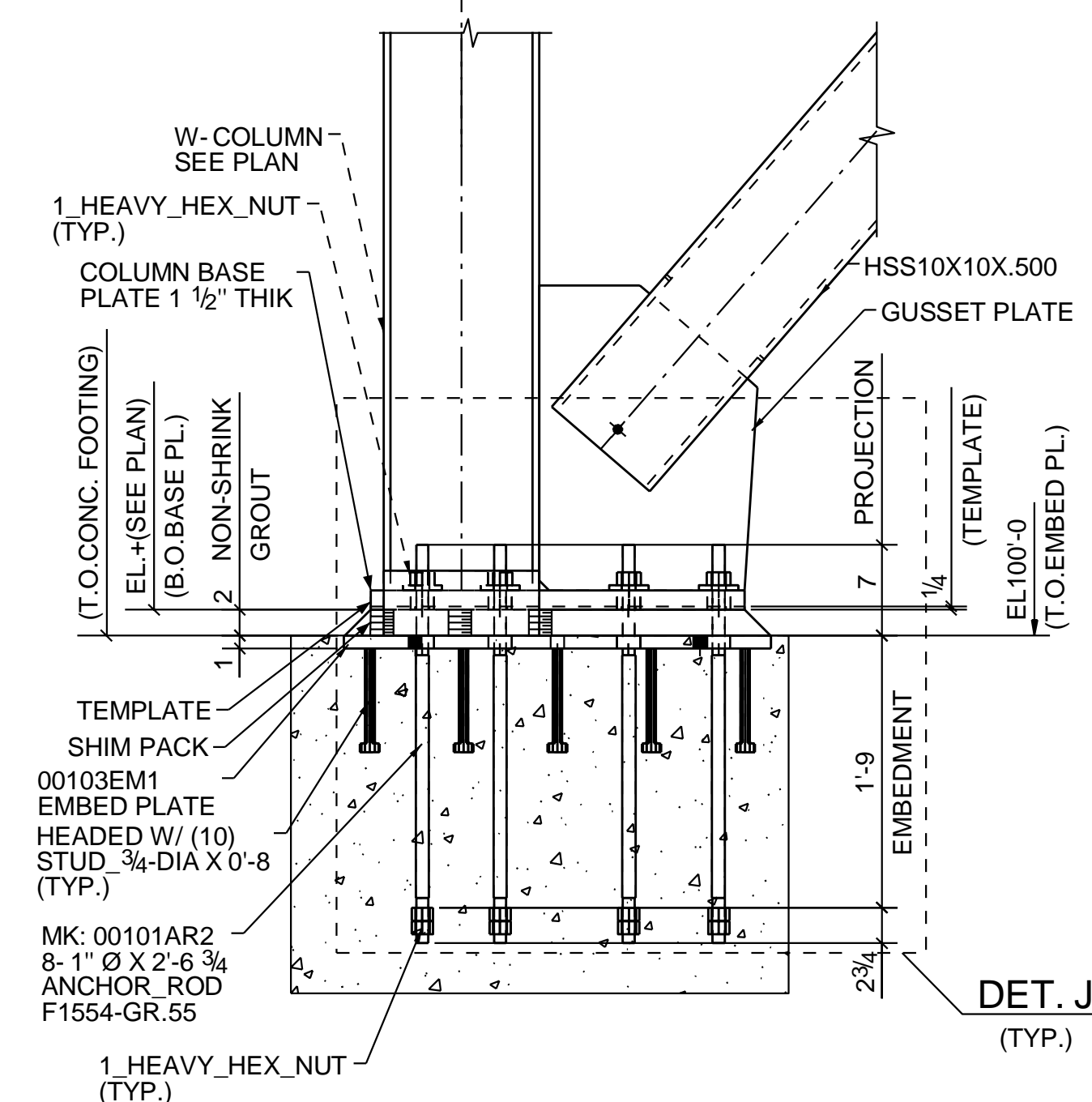
**DETAIL - E**  
(REF: 5/S7.12)  
(ONE-QTY.REQ.)



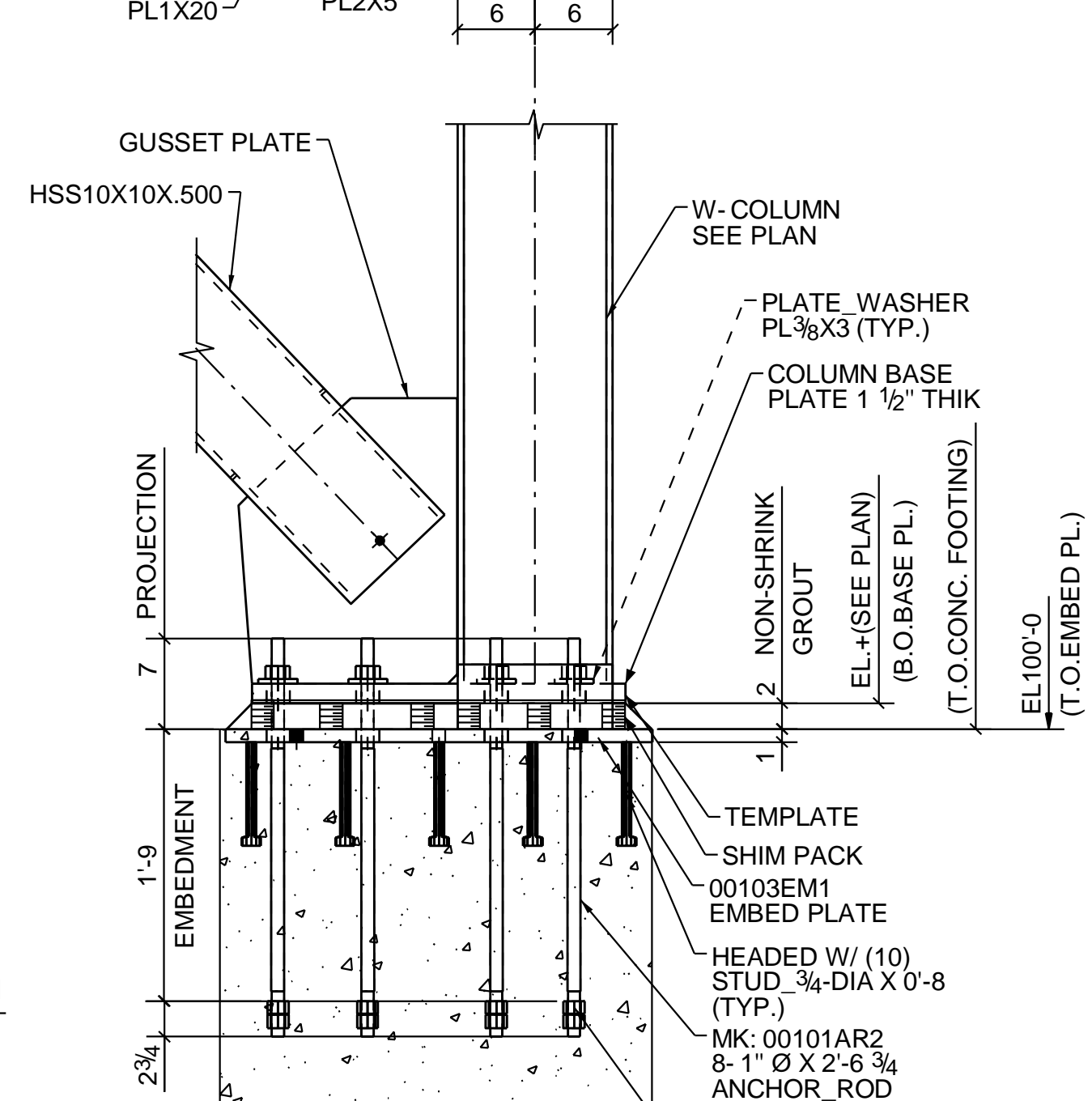
**SECTION K**  
AB104



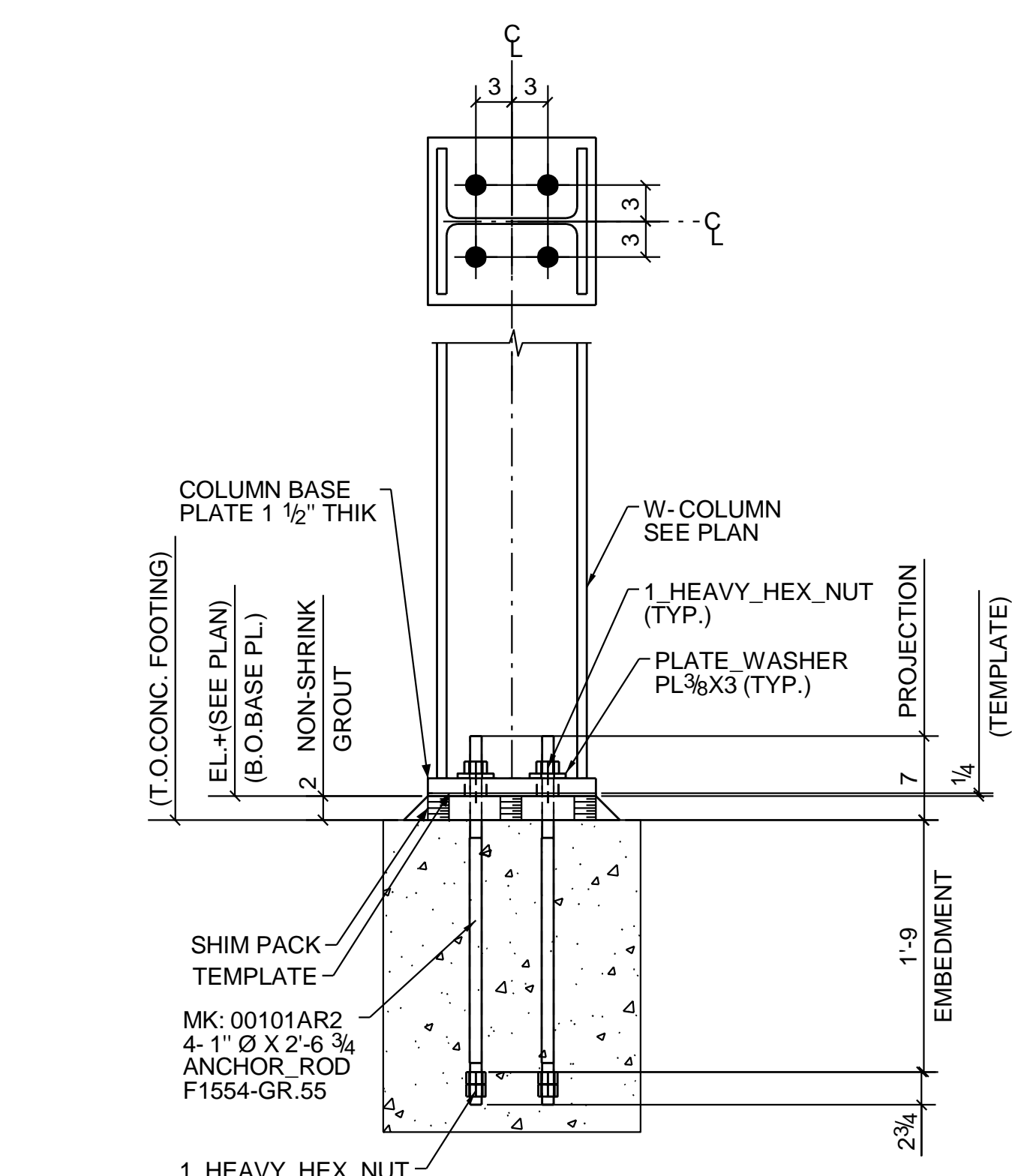
**DETAIL - J**  
(REF: 5/S7.12)



**DETAIL - F**  
(REF: 5/S7.12)  
(ONE-QTY.REQ.)



**DETAIL - G**  
(REF: 5/S7.12)  
(ONE-QTY.REQ.)



**DETAIL - H**  
(REF: 1/S7.02)  
(4-QTY.REQ.)

**G.C. NOTE:**  
THE AISC CODE OF STANDARD PRACTICE, (A PART OF THE CONTRACT DOCUMENTS BY SPECIFICATION REFERENCE), SECTION 7.5.1 STATES:  
"ANCHOR RODS, FOUNDATION BOLTS AND OTHER EMBEDDED ITEMS SHALL BE SET BY THE OWNER'S DESIGNATED REPRESENTATIVE FOR CONSTRUCTION IN ACCORDANCE WITH AN APPROVED EMBEDMENT DRAWING. THE VERIFICATION IN LOCATION OF THESE ITEMS FROM THE DIMENSIONS SHOWN IN THE EMBEDMENT DRAWINGS SHALL BE AS FOLLOWS:  
(A) THE VARIATION IN DIMENSION BETWEEN THE CENTERS OF ANY TWO ANCHOR RODS WITHIN AN ANCHOR-ROD GROUP SHALL BE EQUAL TO OR LESS THAN 1/8".  
(B) THE VARIATION IN DIMENSIONS BETWEEN THE CENTERS OF ADJACENT ANCHOR-ROD GROUPS SHALL BE EQUAL TO OR LESS THAN 1/4".  
(C) THE VARIATION IN ELEVATION OF THE TOPS OF ANCHOR RODS SHALL BE EQUAL TO OR LESS THAN PLUS OR MINUS 1/2".  
(D) THE ACCUMULATED VARIATION IN DIMENSIONS BETWEEN CENTERS OF ANCHOR-ROD GROUPS ALONG THE ESTABLISHED COLUMN LINE THROUGH MULTIPLE ANCHOR-ROD GROUPS SHALL BE EQUAL TO OR LESS THAN 1/4" PER 100 FEET, BUT NOT TO EXCEED A TOTAL OF 1".  
(E) THE VARIATION IN DIMENSION FROM THE CENTER OF ANY ANCHOR-ROD GROUP TO THE ESTABLISHED COLUMN LINE THROUGH THAT GROUP SHALL BE EQUAL TO OR LESS THAN 1/4".  
THE TOLERANCES THAT ARE SPECIFIED IN (B), (C) AND (D) SHALL APPLY TO OFFSET DIMENSIONS SHOWN IN THE STRUCTURAL DESIGN DRAWINGS, MEASURED PARALLEL AND PERPENDICULAR TO THE NEAREST ESTABLISHED COLUMN LINE, FOR INDIVIDUAL COLUMNS THAT ARE SHOWN ON THE STRUCTURAL DESIGN DRAWINGS AS OFFSET FROM ESTABLISHED COLUMN LINES.  
FAILURE TO INFORM IRWIN STEEL OF MISPLACED ANCHOR RODS IN A TIMELY MANNER WILL RESULT IN ADDITIONAL CHARGES. "TIMELY MANNER" MEANS AS SOON AS DISCOVERED BUT PRIOR TO FABRICATED STEEL BEING SHIPPED.

REF.: AS NOTED

Rev.	Date	Description	By
△	09/08/2017	For Construction	AP
△	05/08/2017	For Approval	AP



Customer:			
Architect:	Boka Powell		
Drawn:	HD	Job No:	1721
Checked:	AP	CAD No:	
			SHEET NO. AB107