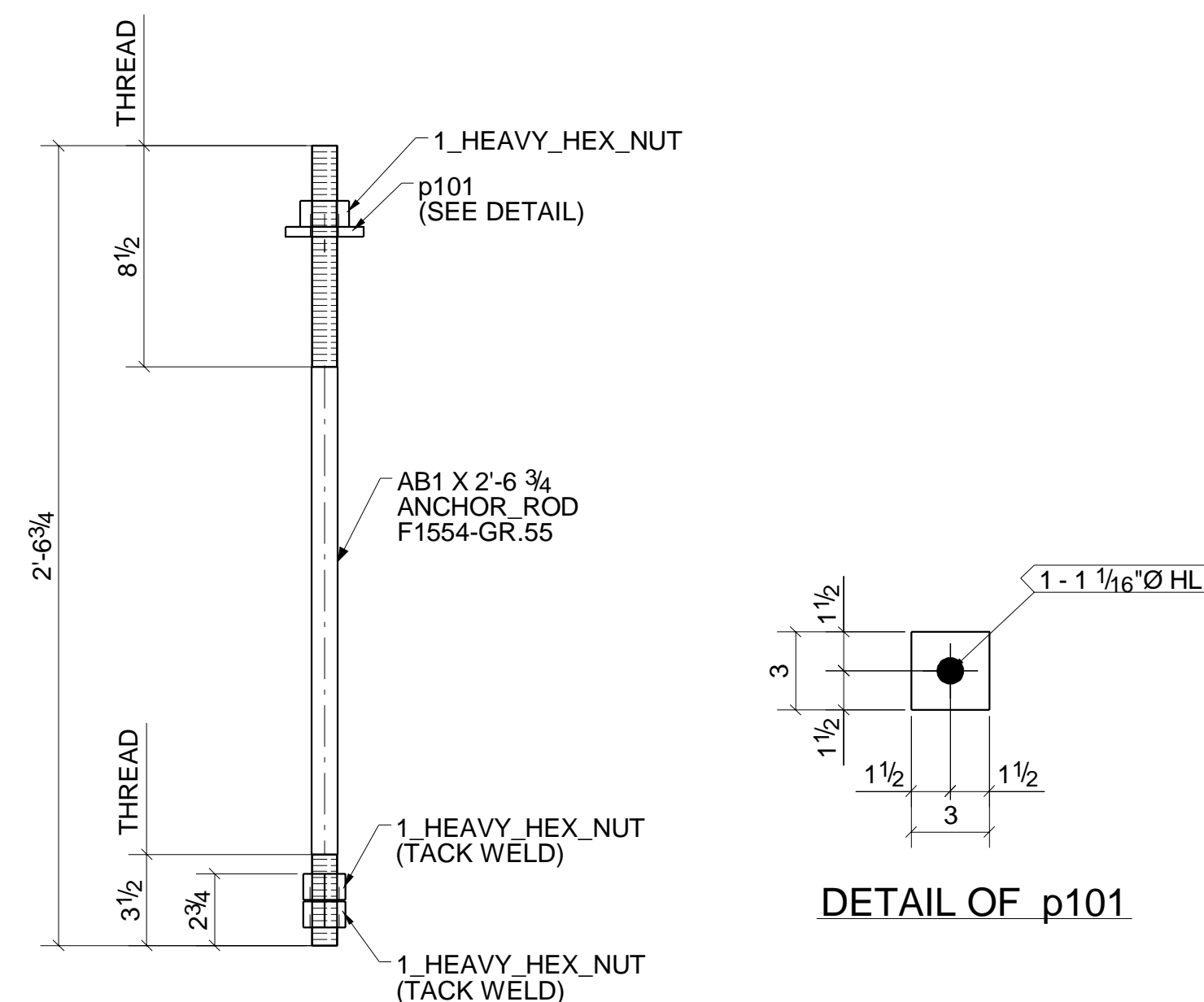
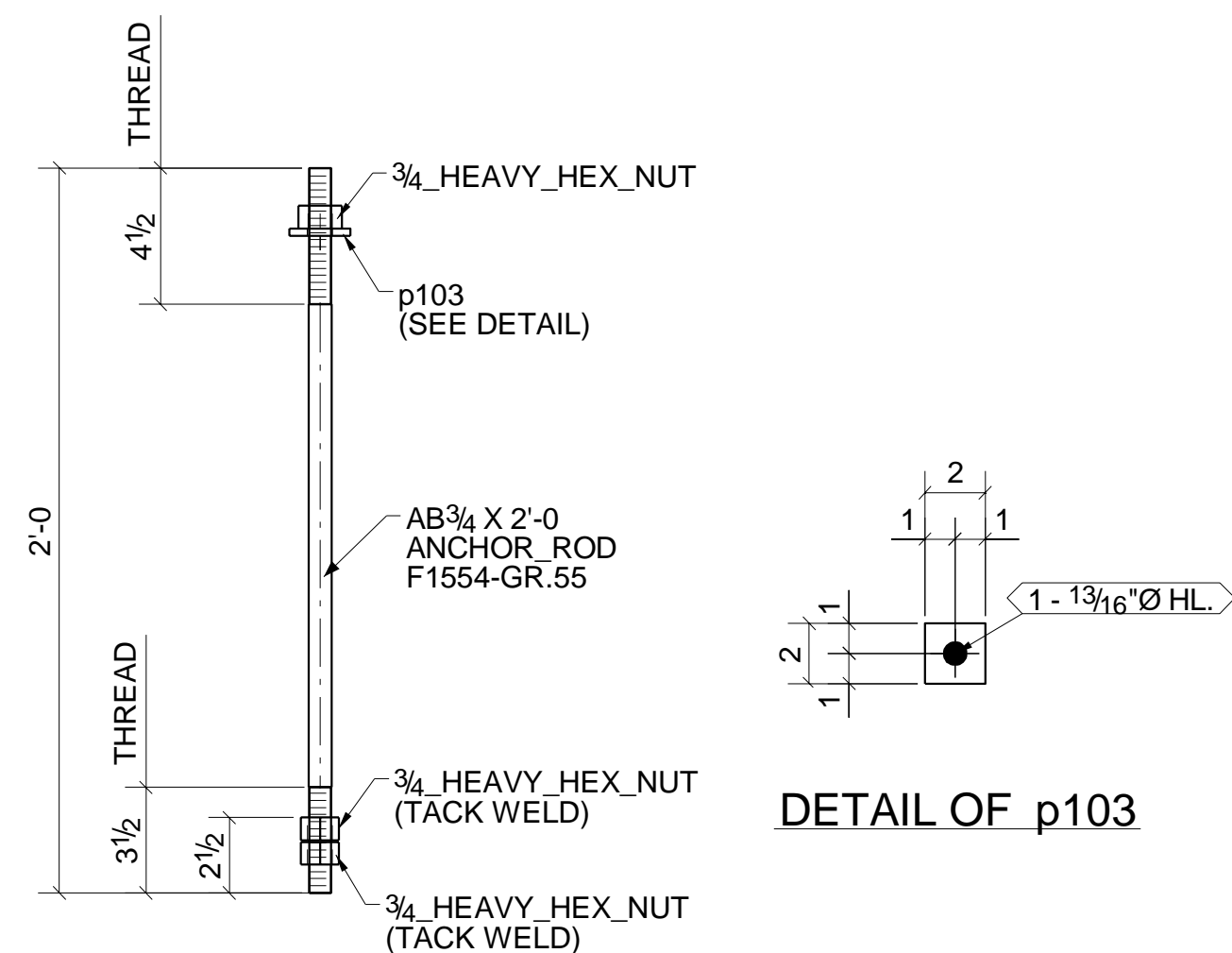


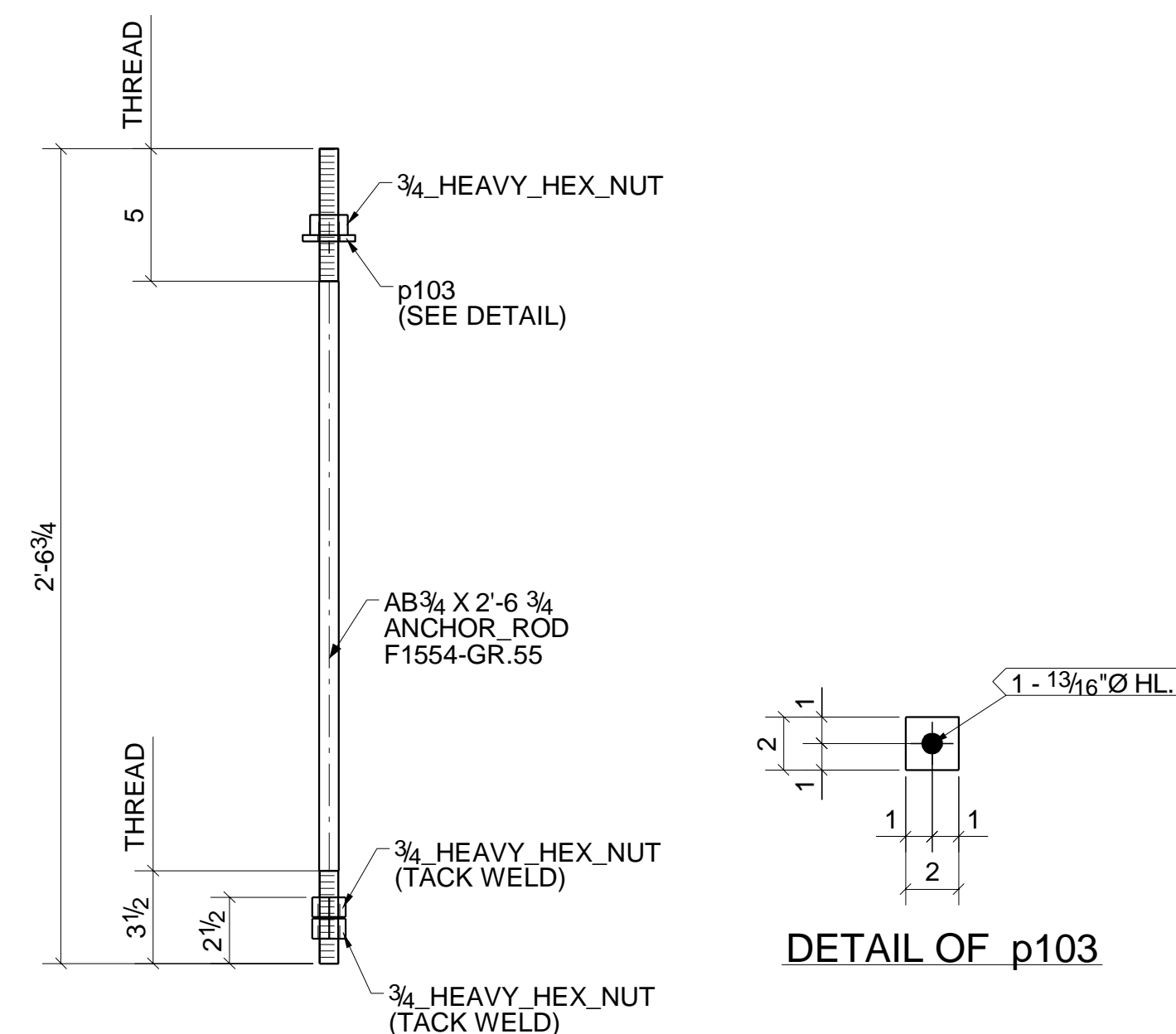
**212 - ANCHOR RODS - 00101AR1**



**64 - ANCHOR RODS - 00101AR2**



**112 - ANCHOR RODS - 00101AR3**



**136 - ANCHOR RODS - 00101AR4**

APPROVER NOTE!  
 REQUESTS FOR APPROVER VERIFICATION NOTED ON  
 THE DRAWING AND NOT RECEIVING A REPLY ARE  
 CONSIDERED TO BE ANSWERED IN THE AFFIRMATIVE.

Line	Mark	No.	Tot	Description	Length		Piece	Remarks	Weight	Order
					Ft	In				
1	00101AR1		212	ANCHOR RODS						
2		212		AB1"	2	6"	00101AR1	F1554-GR.55	1298	
3		212		PL3/8"X3"	0	3"	p101	A572-50	1	
4		636		1_HEAVY_HEX_NUT					1	
5										
6	00101AR2		64	ANCHOR RODS						
7		64		AB1"	2	6 3/4"	00101AR2	F1554-GR.55	401	
8		64		PL3/8"X3"	0	3"	p101	A572-50	1	
9		192		1_HEAVY_HEX_NUT					1	
10										
11	00101AR3		112	ANCHOR RODS						
12		112		AB3/4"	2	0"	00101AR3	F1554-GR.55	292	
13		112		PL1/4"X2"	0	2"	p103	A572-50	0	
14		336		3/4_HEAVY_HEX_NUT					1	
15										
16	00101AR4		136	ANCHOR RODS						
17		136		AB3/4"	2	6 3/4"	00101AR4	F1554-GR.55	458	
18		136		PL1/4"X2"	0	2"	p103	A572-50	0	
19		408		3/4_HEAVY_HEX_NUT					1	
20										
21										
22										
23										
24										
25										
26										
27										
28										
29										
30										
31										
32										
33										
34										
35										
36										
37										
38										
39										
40										
41										
42										
43										
44										
45										
46										
47										
48										
49										
50										