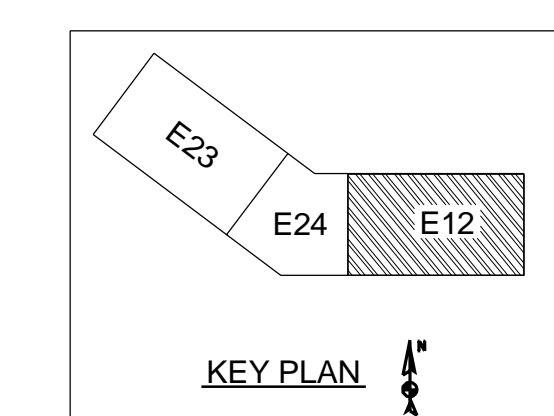


NOTE : FOR PERIMETER BEAMS/COLUMNS BOLTS ARE TO FACE INWARD, i.e. BOLT HEAD SHOULD FACE THE PERIMETER SIDE AND THE NUT SHOULD FACE THE INTERIOR.



PARTIAL 3RD FLOOR FRAMING PLAN
(T.O.S. EL. = 34'-7" U.N.O.)
(* INDICATES T.O.S. EL. = 34'-1")



TOTAL NO. OF SHEAR STUD (THIS SHEET)

DIA	LENGTH	QTY
3/4"	4	3715

FOR FIELD USE